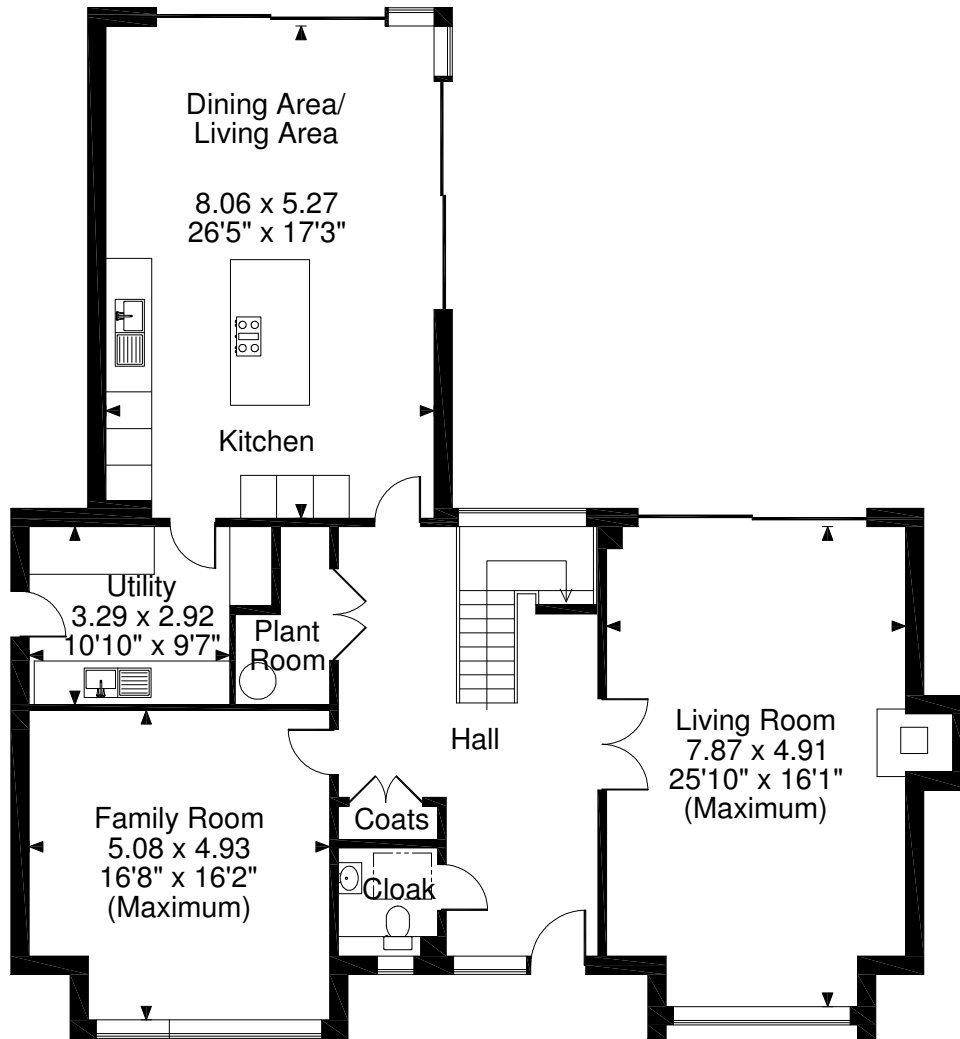


Aintree House, Plot 3, The Ridings, Bullockspit Lane, Southmoor, Oxfordshire. OX13 5HU
Approximate Gross Internal Area
3158 Sq Ft/293 Sq M



**Plot 3 Aintree
Ground Floor**



**Plot 3 Aintree
First Floor**

FOR ILLUSTRATIVE PURPOSES ONLY - NOT TO SCALE

The position & size of doors, windows, appliances and other features are approximate only.

© ehouse. Unauthorised reproduction prohibited. Drawing ref. dig/8318806/SS