







STRIKING NEWLY CONVERTED HISTORIC BARN

ADDERBURY

Banbury c. 3.2 miles Banbury Station c.3.7 Miles
Oxford c. 18 miles

A special Grade II Listed detached barn conversion in a stylish contemporary landscaped courtyard development setting. One of only four barns, Fleet Farm Barn features a dramatic vaulted social kitchen / dining space, sitting room with contemporary wood burning stove, ground floor bedroom suite, galleried landing, 3 first floor bedrooms including substantial Master Bedroom, 3 bathrooms. Atmospheric courtyard garden, further separate formal garden and part walled paddock in total c.0.4 acre. (TOTAL FLOOR AREA: c.2094 sq ft).

ASKING PRICE: £975,000

Contact: Gavin West Tel: 01865 510000

Contact: Matthew Allen Tel: 01295 271555

DIRECTIONS: Proceed North from Oxford on the A4260 Banbury Road passing through Kidlington and Deddington and on to Adderbury. Turn right at the traffic lights in the village signposted Aynho and on the edge of the village 50 metres prior to The Pickled Ploughman pub/restaurant, turn right in to a private driveway, just prior to the head of which is the Fleet Farm Barns Development.

Please discuss with us any aspects which are particularly important to you before travelling to view this property. Neither these particulars, floorplans, nor oral representations, form any part of any offer or contract and their accuracy cannot be guaranteed.

Plot 4 Fleet Farm House, East End Aynho Road, Adderbury, Banbury, OX17 3NJ
Approximate Gross Internal Area
2094 Sq Ft/195 Sq M

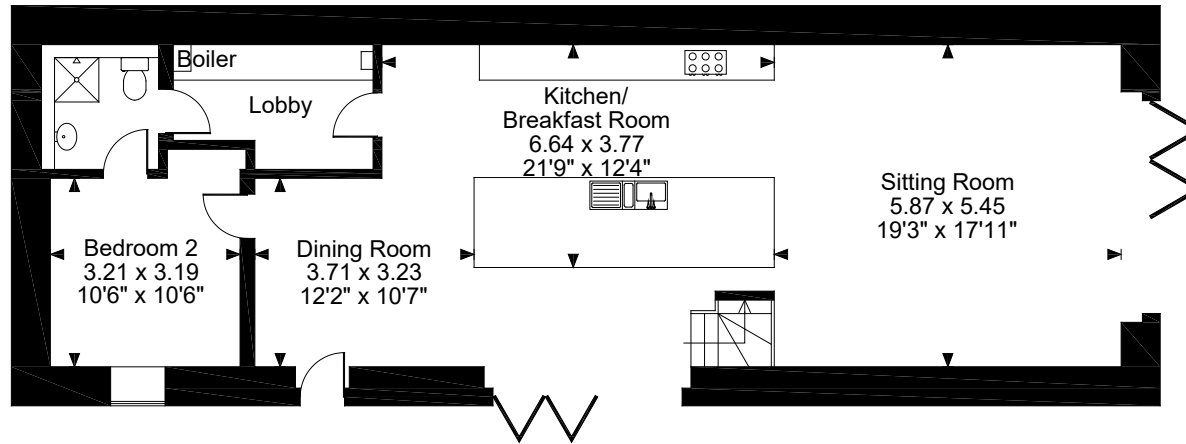


216 Banbury Road
Summertown
Oxford
OX2 7BY
T: 01865 510000
F: 01865 558877
E: oxford@butlersherborn.co.uk

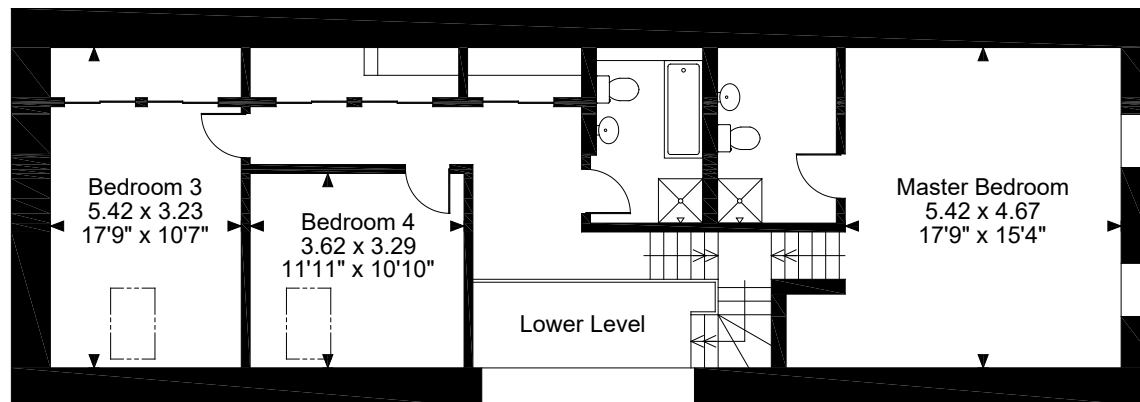
Joint Agents:



50 South Bar
Banbury
Oxfordshire
OX16 9AB
T: 01295 271555
E: banbury@fishergerman.co.uk



Ground Floor



First Floor

FOR ILLUSTRATIVE PURPOSES ONLY - NOT TO SCALE

The position & size of doors, windows, appliances and other features are approximate only.

© ehouse. Unauthorised reproduction prohibited. Drawing ref. dig/8314447/SS

