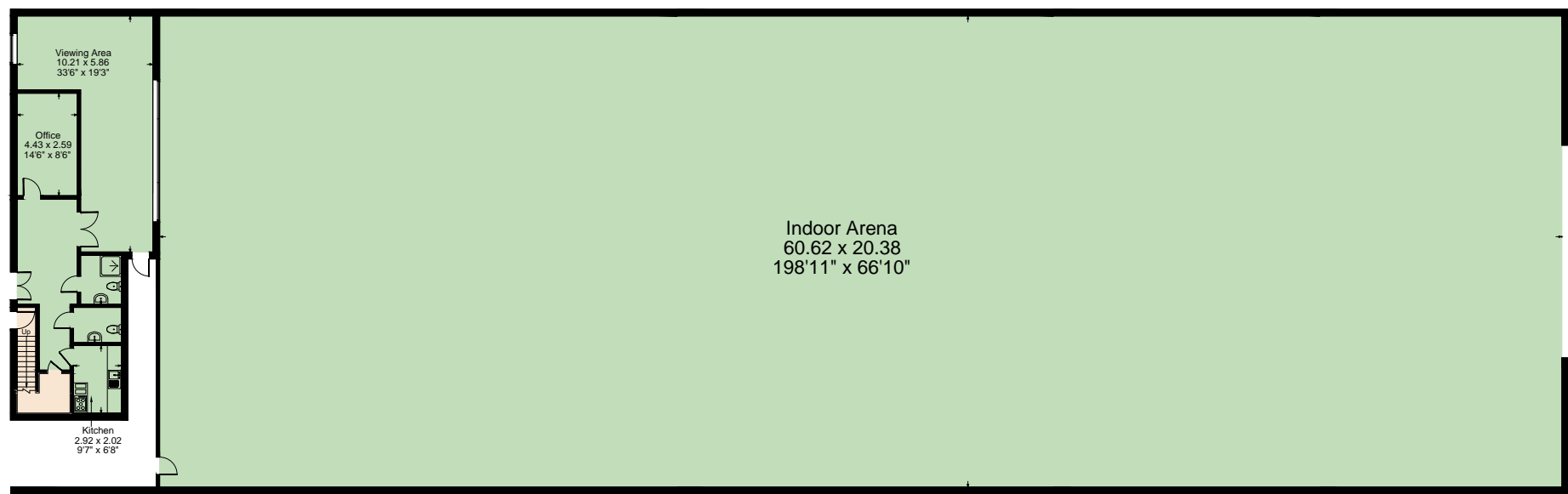
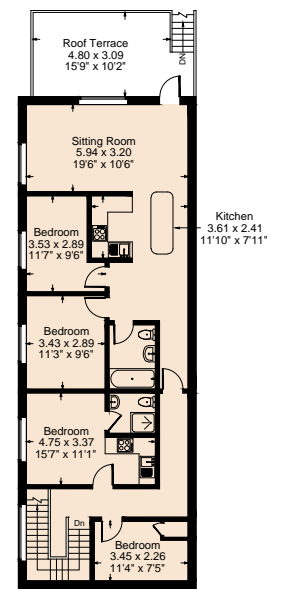


Stable Block



Ground Floor

Outbuilding



First Floor

Approximate Gross Internal Area (Main House) = 417.68 sq m / 4495.87 sq ft  
 Stable Block = 677.34 sq m / 7290.82 sq ft  
 Outbuilding = 1467.08 sq m / 15791.51 sq ft  
 Total Area = 2562.10 sq m / 27578.20 sq ft

Illustration for identification purposes only,  
 measurements are approximate, not to scale.